

MORWENNA

PRESTON

MANAGEMENT

49 LEITHCOTE GARDENS
LONDON, SW16 2UX

PHONE / FAX 020 8835 8147

INFO@MORWENNAPRESTON.COM

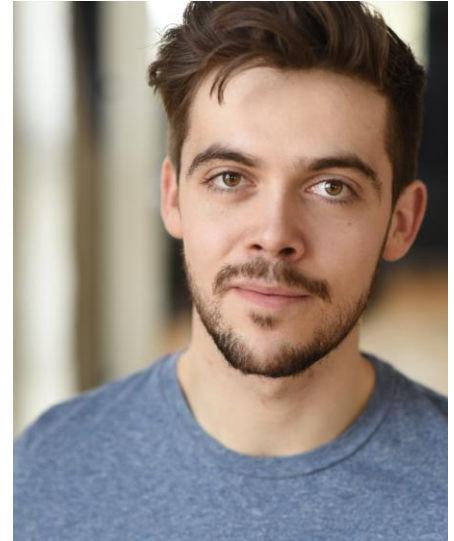
WWW.MORWENNAPRESTON.COM

COLIN BURNICLE

Height: 5'10
Eyes: Brown
Hair: Dark Brown
Playing Age: 24-30
Training: The Arts Educational Schools

Accents: Native Sunderland, Geordie, RP, Cockney, General American, American Southern States, New York

Vocal Range: Tenor – Bottom A flat to Top C
Dance: Highly skilled in Jazz, Tap, Ballet, Pas De Deux



Theatre: Ensemble/u/s Walter/Rob Tom/u/s Josh	Sleepless Big the Musical	Morgan Young Morgan Young	Troubadour Wembley Park Dominion Theatre, West End
Detective/u/s Tom/Nick Matthews/u/s Buddy	Big the Musical Elf the Musical	Morgan Young Morgan Young	Theatre Royal Plymouth/Bord Gais Dublin UK Arena Tour
Ensemble/u/s Buddy Baron Elberfeld/u/s Rolf Ensemble Man	Elf the Musical The Sound of Music White Christmas Midnight	David Morgan Martin Connor John Durnin Kate Golledge	Theatre Royal Plymouth/The Lowry UK No. 1 Tour Pitlochry Festival Theatre Union Theatre
Ensemble/u/s Anatoly Ensemble Ensemble/Dance Captain Dandini	Chess Sleeping Beauty Aladdin Cinderella	Chris Howell Berwick Kaler Daniel Buckroyd Philip Dart	Union Theatre York Theatre Royal Mercury Theatre Colchester Buxton Opera House

Music: Basic Piano
Sport: Swimming, cycling, hiking

MORWENNA PRESTON MANAGEMENT

IS A BOUTIQUE AGENCY FOR ACTORS, SINGERS AND DANCERS