

MORWENNA

PRESTON

MANAGEMENT

49 LEITHCOTE GARDENS  
LONDON, SW16 2UX

PHONE / FAX 020 8835 8147

[INFO@MORWENNAPRESTON.COM](mailto:INFO@MORWENNAPRESTON.COM)

[WWW.MORWENNAPRESTON.COM](http://WWW.MORWENNAPRESTON.COM)

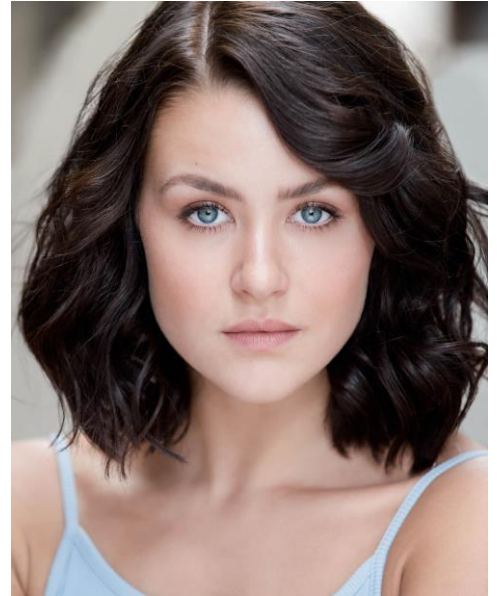
## MILLIE MAYHEW

**Height:** 5'5  
**Eyes:** Blue  
**Hair:** Dark Brown  
**Playing Age:** 20 - 26  
**Training:** Bird College

**Accents:** English Standard (Native), RP, Heightened RP, Cockney, Essex, East Anglian, Suffolk, Leeds, Yorkshire, American Standard, American California, American Southern States, French, Indian

**Vocal Range:** Mezzo Soprano – Vocal range C3 to F5 Belt to E

**Dance:** Highly skilled Jazz, Tap, Ballet, Pointe, Commercial Dance, Contemporary Dance, Pas De Deux, Street Dance, Street Jazz



<b>Theatre:</b>	Scotty Ensemble	The Snowman	Bill Alexander	International Tour
	Doris Miller	Tarzan	Bob Crowley	Stage Entertainment Germany
	Dancer	Damn Yankees	Luis De Abreu	Bird College
	Dancer	Move It	David Leighton	Bird College
	Dancer	CR8	Matt Nicholson	Bird College
	Dancer	Cirque	Luis De Abreu	Bird College
	Dancer	The Mind Is Untouched	Theo Lowe	Bird College
	Dancer	Wonderlands	Luis De Abreu	Bird College
Dancer	Royal Olympia Horse Show	Anthony Johns	BBC	

**Sport:** Athletics, Netball, Pilates, Swimming, Yoga

**Driving:** Car Driving Licence

MORWENNA PRESTON MANAGEMENT

IS A BOUTIQUE AGENCY FOR ACTORS, SINGERS AND DANCERS